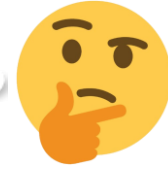


WB 或 IHC 的 Control
要用什麼好呢???



Novus提供您多種 Lysate 與 Tissue slide ,
輕鬆解決沒有control的問題!!!

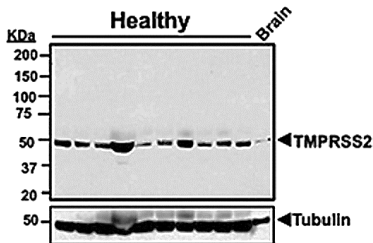
**裂解物
(Lysate)**

- Novus 提供15,000多種裂解物，提供組織、全細胞、細胞膜或細胞核之裂解物。
- 物種：人類 (Human)、小鼠 (Mouse)、大鼠 (Rat)、及靈長類 (Primate)
- 類型：Cell lysate、Overexpression lysate、293T Cell Transient Overexpression lysate、Tissue lysate、Matched Tumor 及 Normal Tissue lysate
- 應用：Western Blot、SDS-PAGE、免疫沉澱 (IP, Chromatin IP)、ELISA等多種實驗

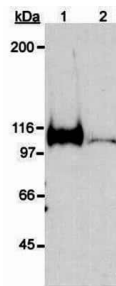
**組織切片
(tissue slide)**

- Novus 提供600多種人類組織玻片，包含正常組織、配對之腫瘤與正常組織/原位癌與轉移性腫瘤
- 組織：腦、肺、心臟、結腸、直腸、胃、乳房、肝臟、腎臟、胰臟、卵巢等等
- 應用：免疫組織化學染色(IHC)、原位雜交(Dual RNAscope ISH-IHC)和 HE 染色
- *另有150多個健康和疾病切片的組織微陣列 (Tissue Microarrays, TMA) 可提供

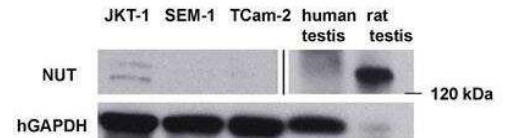
■ 熱門之細胞裂解物 **HOT**



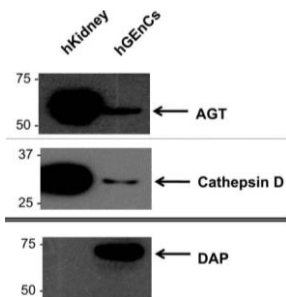
使用Human Brain Whole Tissue Lysate (Adult Whole Normal)為positive control 偵測TMPRSS2及tubulin表現。



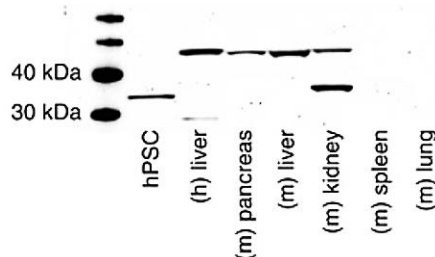
使用COS-7 Nuclear Hypoxic Induced Cell Lysate (貨號NB800-PC26)，偵測HIF-1α的表現。Lane 1:未處理組，lane 2: (0.15 mM) CoCl2 處理16小時。



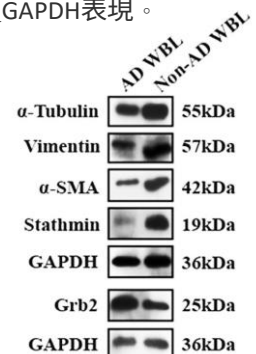
使用Human Testis Whole Tissue Lysate (Adult Whole Normal) (貨號NB820-59266)，偵測NUT及GAPDH表現。



使用Human Kidney Whole Tissue Lysate (Adult Whole Normal) (貨號NB820-59231) 作為對照組偵測不同蛋白質表現。



使用Human Liver Whole Tissue Lysate (Adult Whole Normal) (貨號NB820-59232)作為positive control，偵測不同組織中NTCP 蛋白之表現。



使用AD (貨號NB820-59363)及non-AD (貨號NB820-59177)分析不同蛋白質表現。AD：Human Brain Whole Tissue Lysate (Adult Whole Alzheimer's)；non-AD：Human Brain Whole Tissue Lysate (Adult Whole Normal)



■ 人類組織玻片(Human Tissue slide)

處理步驟：組織切除後立即固定於福馬林中，並包埋在石蠟中

切片厚度：切片厚度為5μm

品質管控：每批中至少一張組織載玻片經過 H & E 染色 (如下圖)

內容物：5片玻片，每對組織切片均來自同一提供者之相鄰/連續切片

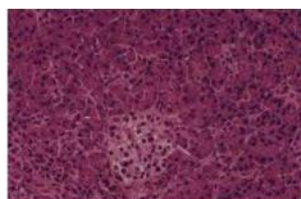
以下為部分產品列表，若需其他可查詢原廠網站
<https://www.novusbio.com/>

若有分離 FFPE中的DNA及RNA球，可提供放置於試管中之組織切片，請先洽詢我們。

貨號	品名
NBP1-78269	Human Adult Normal Kidney Slides (Adult Normal)
NBP1-78270	Adult Normal Colon Slides (Adult Normal)
NBP2-21771	Human Spleen Slides (Adult Normal)
NBP2-30173	Adrenal normal tissue Tissue Slides (Normal)
NBP2-30174	Appendix Tissue Slides (Normal)
NBP2-30176	Main bronchus chronic bronchitis tissue Tissue Slides (Normal)
NBP2-30177	Colon Tissue Slides (Normal)
NBP2-30178	Esophagus Tissue Slides (Normal)
NBP2-30182	Lung Tissue Slides (Normal)
NBP2-30183	Lymph Node Tissue Slides (Normal)
NBP2-30184	Myometrium Tissue Slides (Normal)
NBP2-30185	Nipple Tissue Slides (Normal)
NBP2-30190	Ovary Tissue Slides (Normal)
NBP2-30191	Pancreas Tissue Slides (Normal)
NBP2-30192	Parotid Tissue Slides (Normal)
NBP2-30193	Placenta Tissue Slides (Normal)
NBP2-30195	Rectum Tissue Slides (Normal)
NBP2-30196	Salpinx Tissue Slides (Normal)
NBP2-30197	Seminal Vesicle Tissue Slides (Normal)
NBP2-30198	Skeletal Muscle Tissue Slides (Normal)
NBP2-30201	Small Intestine Jejunum Tissue Slides (Normal)
NBP2-30202	Spleen Tissue Slides (Normal)
NBP2-30203	Stomach Antrum Tissue Slides (Normal)
NBP2-30204	Stomach Fundus Tissue Slides (Normal)
NBP2-30206	Thyroid Tissue Slides (Normal)
NBP2-30207	Tonsil Tissue Slides (Normal)
NBP2-30208	Umbilical Cord Tissue Slides (Normal)

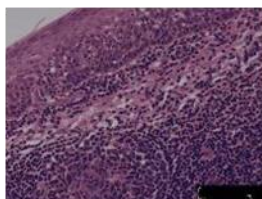
貨號	品名
NBP2-77518	Brain Amygdala Tissue Slides (Adult Normal)
NBP2-77519	Brain Stem Tissue Slides (Adult Normal)
NBP2-77520	Brain Cerebellum Tissue Slides (Adult Normal)
NBP2-77521	Brain Cerebellum Tissue Slides (Adult Normal Left)
NBP2-77522	Brain Cerebellum Tissue Slides (Adult Normal Right)
NBP2-77523	Brain Cerebral Cortex Tissue Slides (Adult Normal)
NBP2-77524	Brain Cerebral Meninges Tissue Slides (Adult Normal)
NBP2-77525	Brain Corpus Callosum Tissue Slides (Adult Normal)
NBP2-77526	Brain Diencephalon Tissue Slides (Adult Normal)
NBP2-77527	Brain Frontal Lobe Tissue Slides (Adult Normal)
NBP2-77528	Brain Hippocampus Tissue Slides (Adult Normal)
NBP2-77529	Brain Medulla Oblongata Tissue Slides (Adult Normal)
NBP2-77530	Brain Midbrain Tissue Slides (Adult Normal)
NBP2-77531	Brain Occipital Lobe Tissue Slides (Adult Normal)
NBP2-77532	Brain Olfactory Tissue Slides (Adult Normal)
NBP2-77533	Brain Optic Nerve Tissue Slides (Adult Normal)
NBP2-77534	Brain Parietal Lobe Tissue Slides (Adult Normal)
NBP2-77535	Brain Pons Tissue Slides (Adult Normal)
NBP2-77536	Brain Postcentral Gyrus Tissue Slides (Adult Normal)
NBP2-77537	Brain Precentral Gyrus Tissue Slides (Adult Normal)
NBP2-77538	Brain Temporal Lobe Tissue Slides (Adult Normal)
NBP2-77539	Brain Thalamus Tissue Slides (Adult Normal)
NBP2-77540	Brain Vermis Cerebelli Tissue Slides (Adult Normal)
NBP2-77547	Heart Auricula Tissue Slides (Adult Normal Left)
NBP2-77548	Heart Auricula Tissue Slides (Adult Normal Right)
NBP2-77549	Heart Interventricular Septum Tissue Slides (Adult Normal)
NBP2-77550	Heart Pericardium Tissue Slides (Adult Normal)

■ H&E染色人類組織切片



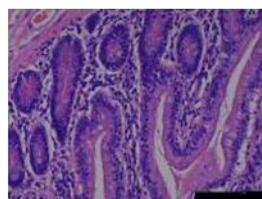
正常胰臟組織切片-石蠟包埋

(NBP2-30191)



正常扁桃腺組織切片-石蠟包埋

(NBP2-30207)



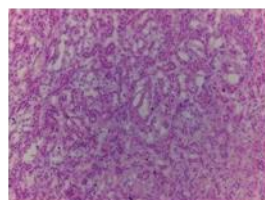
正常小腸空腸組織切片-石蠟包埋

(NBP2-30201)



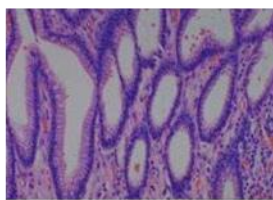
正常大腦額葉組織切片-石蠟包埋

(NBP2-77761)



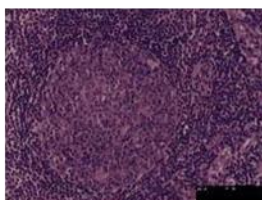
正常腎臟組織切片-石蠟包埋

(NBP2-77572)



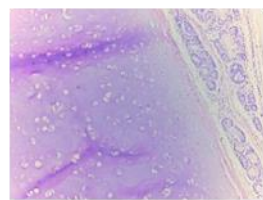
正常胃竇組織切片-石蠟包埋

(NBP2-30203)



正常淋巴組織切片-石蠟包埋

(NBP2-30183)



正常氣管組織切片-石蠟包埋

(NBP2-77809)

■ 配對之 腫瘤與正常組織/原位癌與轉移性腫瘤

若需其他產品可上原廠網站 <https://www.novusbio.com/>

處理步驟：福馬林(Paraffin)切片－組織切除後立即固定於福馬林中，並包埋在石蠟中

冷凍(Frozen)切片－組織切除後立即快速冷凍於液態氮中，並包埋於OCT 中

切片厚度：福馬林切片厚度為5μm；冷凍切片厚度則為 5-10 μm，置於帶正電之玻片上，且使用冰丙酮固定

品質管控：每批中至少一張組織切片經過 H & E 染色 (如下圖)

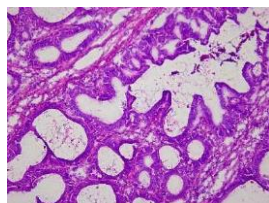
內容物：每對組織切片均來自同一提供者，包含5片病理玻片及5片相鄰正常組織玻片

品名	貨號	包埋型式	包裝
Artery Matched Arteriosclerosis & Normal Tissue Slides (Heart Disease) 動脈硬化	NBP2-77449	冷凍	10片玻片
Heart Aorta Matched Arteriosclerosis & Normal Tissue Slides (Heart Disease) 心臟主動脈硬化	NBP2-77555	冷凍	
Breast Matched Primary Tumor & Metastatic Tissue Slides (Tumor) 乳房原位癌及轉移腫瘤	NBP2-77971	福馬林	
	NBP2-77662	冷凍	
Breast Matched Tumor & Normal Tissue Slides (Tumor) 乳房腫瘤與正常組織	NBP2-77977	福馬林	
	NBP2-77669	冷凍	
Colon Matched Primary Tumor & Metastatic Tumor Slides (Tumor) 結腸原位癌及轉移腫瘤	NBP2-77972	福馬林	
	NBP2-77663	冷凍	
Colon Matched Tumor & Normal Tissue Slides (Tumor) 結腸腫瘤與正常組織	NBP2-77978	福馬林	
	NBP2-77670	冷凍	
Kidney Matched Primary Tumor & Metastatic Tumor Slides (Tumor) 腎臟原位癌及轉移腫瘤	NBP2-77973	福馬林	
	NBP2-77664	冷凍	
Kidney Matched Tumor & Normal Tissue Slides (Tumor) 腎臟腫瘤與正常組織	NBP2-77979	福馬林	
	NBP2-77671	冷凍	
Liver Matched Primary Tumor & Metastatic Tumor Slides (Tumor) 肝臟原位癌及轉移腫瘤	NBP2-77974	福馬林	
	NBP2-77665	冷凍	
Liver Matched Tumor & Normal Tissue Slides (Tumor) 肝臟腫瘤與正常組織	NBP2-77980	福馬林	
	NBP2-77672	冷凍	
Lung Matched Primary Tumor & Metastatic Tumor Slides (Tumor) 肺原位癌及轉移腫瘤	NBP2-77975	福馬林	
	NBP2-77666	冷凍	
Lung Matched Tumor & Normal Tissue Slides (Tumor) 肺腫瘤與正常組織	NBP2-77981	福馬林	
	NBP2-77673	冷凍	
Rectum Matched Primary Tumor & Metastatic Tumor Slides (Tumor) 直腸原位癌及轉移腫瘤	NBP2-77976	福馬林	
	NBP2-77667	冷凍	
Rectum Matched Tumor & Normal Tissue Slides (Tumor) 直腸腫瘤與正常組織	NBP2-77982	福馬林	
	NBP2-77674	冷凍	
Stomach Matched Primary Tumor & Metastatic Tumor Slides (Tumor) 胃原位癌及轉移腫瘤	NBP2-77983	福馬林	
	NBP2-77668	冷凍	
Stomach Matched Tumor & Normal Tissue Slides (Tumor) 胃腫瘤與正常組織	NBP2-77984	福馬林	
	NBP2-77675	冷凍	

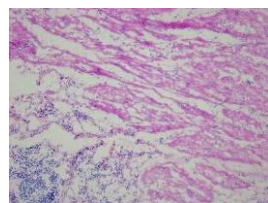
■ H&E染色之 腫瘤組織與正常組織對/原位癌與轉移性腫瘤對



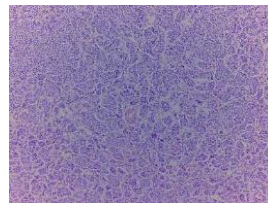
配對之腎臟腫瘤及正常組織
玻片-冷凍包埋 (NBP2-77671)



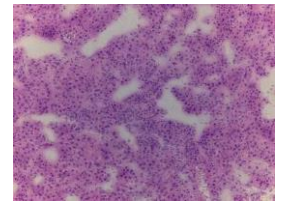
配對之結腸腫瘤及正常組織
玻片-冷凍包埋 (NBP2-77670)



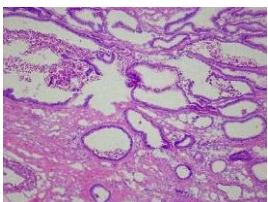
配對之結腸腫瘤及正常組織
玻片-冷凍包埋 (NBP2-77674)



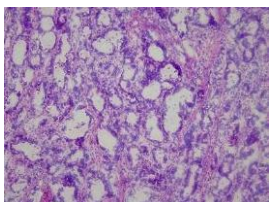
配對之乳房腫瘤及正常組織
玻片-冷凍包埋 (NBP2-77977)



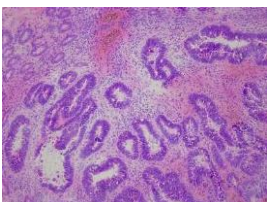
配對之肝臟腫瘤及正常組織
玻片-冷凍包埋 (NBP2-77672)



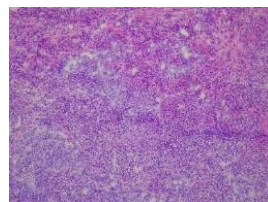
配對之結腸原發腫瘤和轉移性
腫瘤玻片-冷凍包埋 (NBP2-
77663)



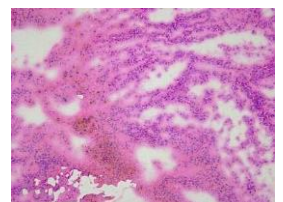
配對之胃原發腫瘤和轉移性
腫瘤玻片-冷凍包埋 (NBP2-
77668)



配對之結腸原發腫瘤和轉移性
腫瘤玻片-冷凍包埋 (NBP2-
77667)



配對之肺原發腫瘤和轉移性
腫瘤玻片-冷凍包埋 (NBP2-
77666)



配對之肝臟原發腫瘤和轉移性
腫瘤玻片-冷凍包埋 (NBP2-
77665)

以下為部分產品列表，若需其他可查詢原廠網站
<https://www.novusbio.com/>

■ 人類組織裂解物 (Human Tissue lysate)

貨號	品名	包裝
NB820-59177	Human Brain Whole Tissue Lysate (Adult Whole Normal) 人類腦全組織裂解物	1mg (5mg/ ml)
NB820-59217	Human Heart Whole Tissue Lysate (Adult Whole Normal) 人類心臟全組織裂解物	
NB820-59232	Human Liver Whole Tissue Lysate (Adult Whole Normal) 人類肝臟全組織裂解物	
NB820-59231	Human Kidney Whole Tissue Lysate (Adult Whole Normal) 人類腎臟全組織裂解物	
NB820-59363	Human Brain Whole Tissue Lysate (Adult Whole Alzheimer's) 人類腦全組織裂解物 (成人全阿茲海默症)	
NB820-59180	Human Brain Cerebellum Whole Tissue Lysate (Adult Whole Normal) 人類腦小腦全組織裂解物	
NB820-59266	Human Testis Whole Tissue Lysate (Adult Whole Normal) 人類睪丸全組織裂解物	
NB820-59186	Human Brain Frontal Lobe Whole Tissue Lysate (Adult Whole Normal) 人類腦額葉全組織裂解物	
NB820-59203	Human Breast Whole Tissue Lysate (Adult Whole Normal) 人類乳腺全組織裂解物	
NB820-59182	Human Brain Cerebral Cortex Whole Tissue Lysate (Adult Whole Normal) 人類腦大腦皮質全組織裂解物	
NB820-59243	Human Ovary Whole Tissue Lysate (Adult Whole Normal) 人類卵巢全組織裂解物	
NB820-59186	Human Brain Frontal Lobe Whole Tissue Lysate (Adult Whole Normal) 人類腦額葉全組織裂解物	
NB820-59237	Human Lung Whole Tissue Lysate (Adult Whole Normal) 人類肺全組織裂解物	
NB820-59239	Human Lung Whole Tissue Lysate (Adult Whole Normal) 人類肺全組織裂解物	
NB820-59254	Human Skin Whole Tissue Lysate (Adult Whole Normal) 人類皮膚全組織裂解物	
NB820-60604	Human Pancreas Membrane Tissue Lysate (Adult Membrane Normal) 人類胰臟膜組織裂解物	
NB820-59291	Human Liver Whole Tissue Lysate (Adult Whole Diabetes) 人類肝臟全組織裂解物	
NB820-59258	Human Spinal Cord Whole Tissue Lysate (Adult Whole Normal) 人類脊髓全組織裂解物	
NB820-59259	Human Spleen Whole Tissue Lysate (Adult Whole Normal) 人類脾臟全組織裂解物	
NB820-59198	Human Brain Temporal Lobe Whole Tissue Lysate (Adult Whole Normal) 人類腦顳葉全組織裂解物	

■ 細胞裂解物 或 大量表現蛋白之細胞裂解物 (表現細胞株為HEK293T)

貨號	品名	包裝
NB800-PC26	COS-7 Nuclear Hypoxic Induced Cell Lysate	4 Vials
NBL1-16161	SLC44A2 Overexpression Lysate	0.1mg
NBL1-10286	HIF-2 alpha/EPAS1 Overexpression Lysate	0.1mg
NBP2-08356	CYLD Overexpression Lysate	0.1mg
NBP2-25057	Ramos Cell Lysate	0.1mg
NBP2-25054	T98G Cell Lysate	0.1mg
NBP2-3645	HeLa Hypoxic / Normoxic Cell Lysate	2 Vials
NBL1-13340	GDF-8/Myostatin Overexpression Lysate	0.1mg
NBL1-08995	CDC25B Overexpression Lysate	0.1mg
NBL1-13748	NPM1 Overexpression Lysate	0.1mg
NBL1-17955	ZADH2 Overexpression Lysate	0.1mg
NBL1-07862	Aurora C Overexpression Lysate	0.1mg
NBL1-10817	FoxP3 Overexpression Lysate	0.1mg
NBL1-17965	ZBTB22 Overexpression Lysate	0.1mg
NBL1-07807	Sodium Potassium ATPase Alpha 1 Overexpression Lysate	0.1mg
NBP1-30158	Raw 264.7 Whole Cell - T0901317 treated Whole Cell Lysate	0.1mg
NBL1-17502	ISG15 Activating Enzyme/UBE1L Overexpression Lysate	0.1mg
NBL1-08721	Calcium-sensing R/CaSR Overexpression Lysate	0.1mg
NBP2-04936	IL-21R Overexpression Lysate	0.1mg
NBL1-13619	NFkB p105/p50 Overexpression Lysate	0.1mg
NBL1-13721	iNOS Overexpression Lysate	0.1mg

■ 配對之腫瘤組織與正常組織之裂解物

貨號	品名	包裝
NBP2-47105 ~ NBP2-47122	Breast Matched Tumor and Normal Tissue Lysate	2 Vials
NBP2-47070 ~ NBP2-47079	Colon Matched Tumor & Normal Tissue Lysate	
NBP2-47099 ~ NBP2-47103	Kidney Matched Tumor & Normal Tissue Lysate	
NBP2-47086 ~ NBP2-47089 NBP2-47094	Liver Matched Tumor & Normal Tissue Lysate	
NBP2-47091 ~ NBP2-47098	Lung Matched Tumor & Normal Tissue Lysate	
NBP2-47069	Stomach Matched Tumor & Normal Tissue Lysate	
NBP2-47080 ~ NBP2-47085	Thyroid Matched Tumor & Normal Tissue Lysate	
NBP2-47104	Thyroid Matched Tumor & Normal Tissue Lysate	

■ 細胞膜或細胞核裂解物

貨號	品名	包裝
NBL1-26466	A-431 Membrane Cell Lysate	0.1 mg
NBL1-26467	HeLa Membrane Cell Lysate	0.1 mg
NBL1-26468	Jurkat Membrane Cell Lysate	0.1 mg
NBL1-26469	K-562 Membrane Cell Lysate	0.1 mg
NBL1-26470	MCF-7 Membrane Cell Lysate	0.1 mg
NBL1-26471	Raji Membrane Cell Lysate	0.1 mg
NB800-PC26	COS-7 Nuclear Hypoxic Induced Cell Lysate	4 Vials
NB800-PC9	HeLa Nuclear Cell Lysate	0.1 mg