

1kb Plus DNA RTU Ladder (100bp-10 kb) 500µl

Cat. No.: BR343-500

COMPONENTS: 500 µl

10 mM Tris-HCl (pH 8.0), 10 mM Na-EDTA, 0.025% Orange G, 0.005% Bromophenol blue, 0.005% Xylene cyanol FF and 10% Glycerol.

DESCRIPTION: Loading volume: 5 µl/well

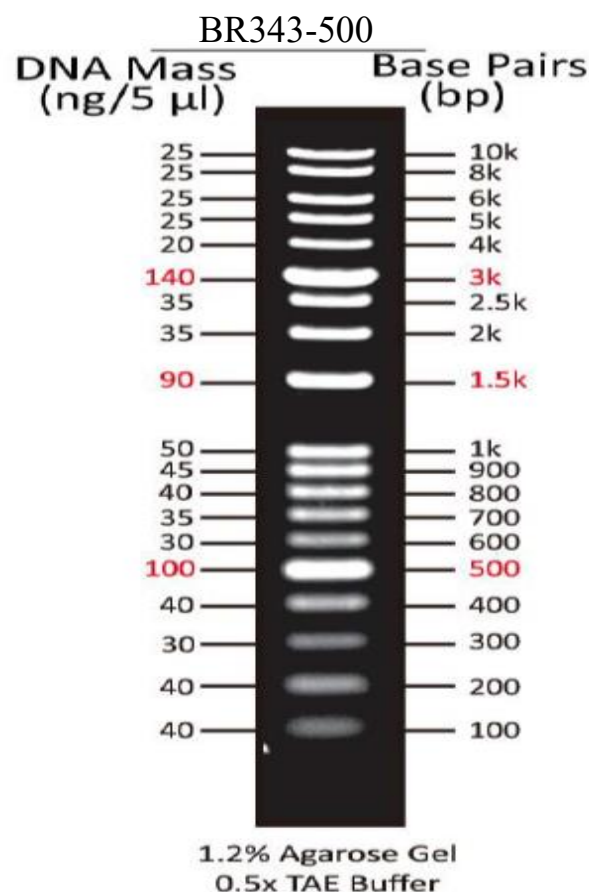
Size range: 100~10000 bp

Package size: 87µg / 500µl

INSTRUCTIONS:

The Biomate 1kb Plus DNA RTU Ladder (100bp-10 kb) 500µl (BR343-500) is a ready-to-use DNA ladder, which is pre-mixed with loading dye for direct gel loading. The DNA Ladder DM3200 is composed of 19 individual DNA fragments: 10k, 8k, 6k, 5k, 4k, 3k, 2.5k, 2k, 1.5k, 1k, 900, 800, 700, 600, 500, 400, 300, 200, and 100 bp derived from a mixture of PCR products and specifically digested plasmid DNA.

This product contains three enhanced bands (3 kb, 1.5 kb and 500 bp) for easy reference. In addition, three tracking dyes, Xylene cyanol FF, Bromophenol blue and Orange G which mimic the migration of 4,000 bp, 500 bp and 50 bp dsDNA during electrophoresis are added for real time monitoring.



STORAGE:

Store at Room temperature ≥ 6 months,

4°C ≥ 12 months,

-20°C ≥ 36 months

For Research Using Only.

1kb Plus DNA RTU Ladder (100bp-10 kb) 500µl

Cat. No.: BR343-500

COMPONENTS: 500 µl

10 mM Tris-HCl (pH 8.0), 10 mM Na-EDTA, 0.025% Orange G, 0.005% Bromophenol blue, 0.005% Xylene cyanol FF and 10% Glycerol.

DESCRIPTION: Loading volume: 5 µl/well

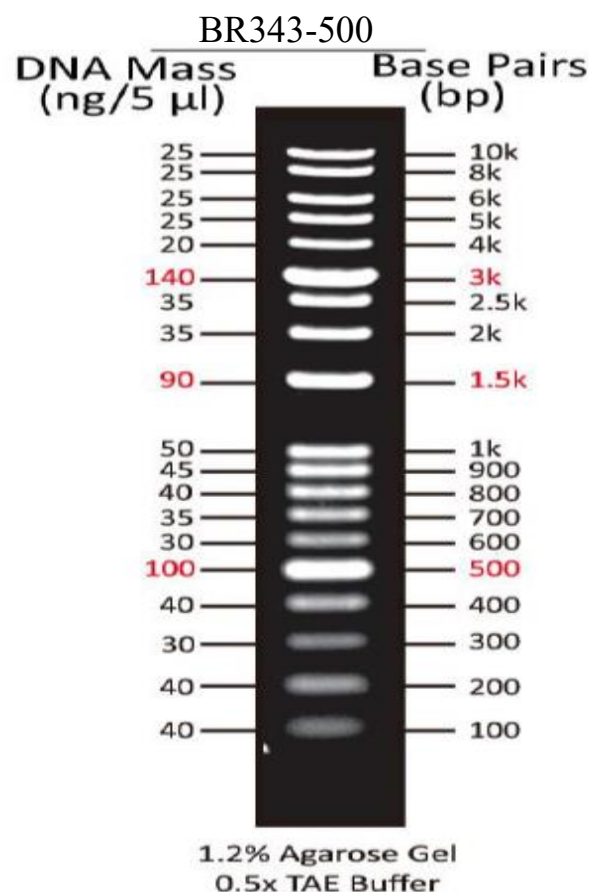
Size range: 100~10000 bp

Package size: 87µg / 500µl

INSTRUCTIONS:

The Biomate 1kb Plus DNA RTU Ladder (100bp-10 kb) 500µl (BR343-500) is a ready-to-use DNA ladder, which is pre-mixed with loading dye for direct gel loading. The DNA Ladder DM3200 is composed of 19 individual DNA fragments: 10k, 8k, 6k, 5k, 4k, 3k, 2.5k, 2k, 1.5k, 1k, 900, 800, 700, 600, 500, 400, 300, 200, and 100 bp derived from a mixture of PCR products and specifically digested plasmid DNA.

This product contains three enhanced bands (3 kb, 1.5 kb and 500 bp) for easy reference. In addition, three tracking dyes, Xylene cyanol FF, Bromophenol blue and Orange G which mimic the migration of 4,000 bp, 500 bp and 50 bp dsDNA during electrophoresis are added for real time monitoring.



STORAGE:

Store at Room temperature ≥ 6 months,

4°C ≥ 12 months,

-20°C ≥ 36 months

For Research Using Only.