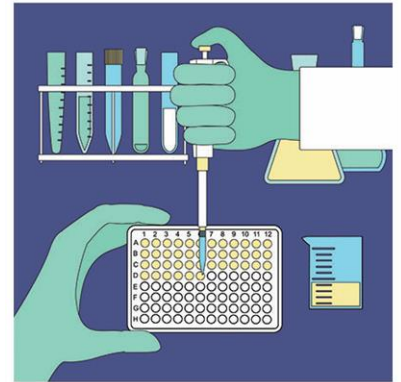


AAT 專刊



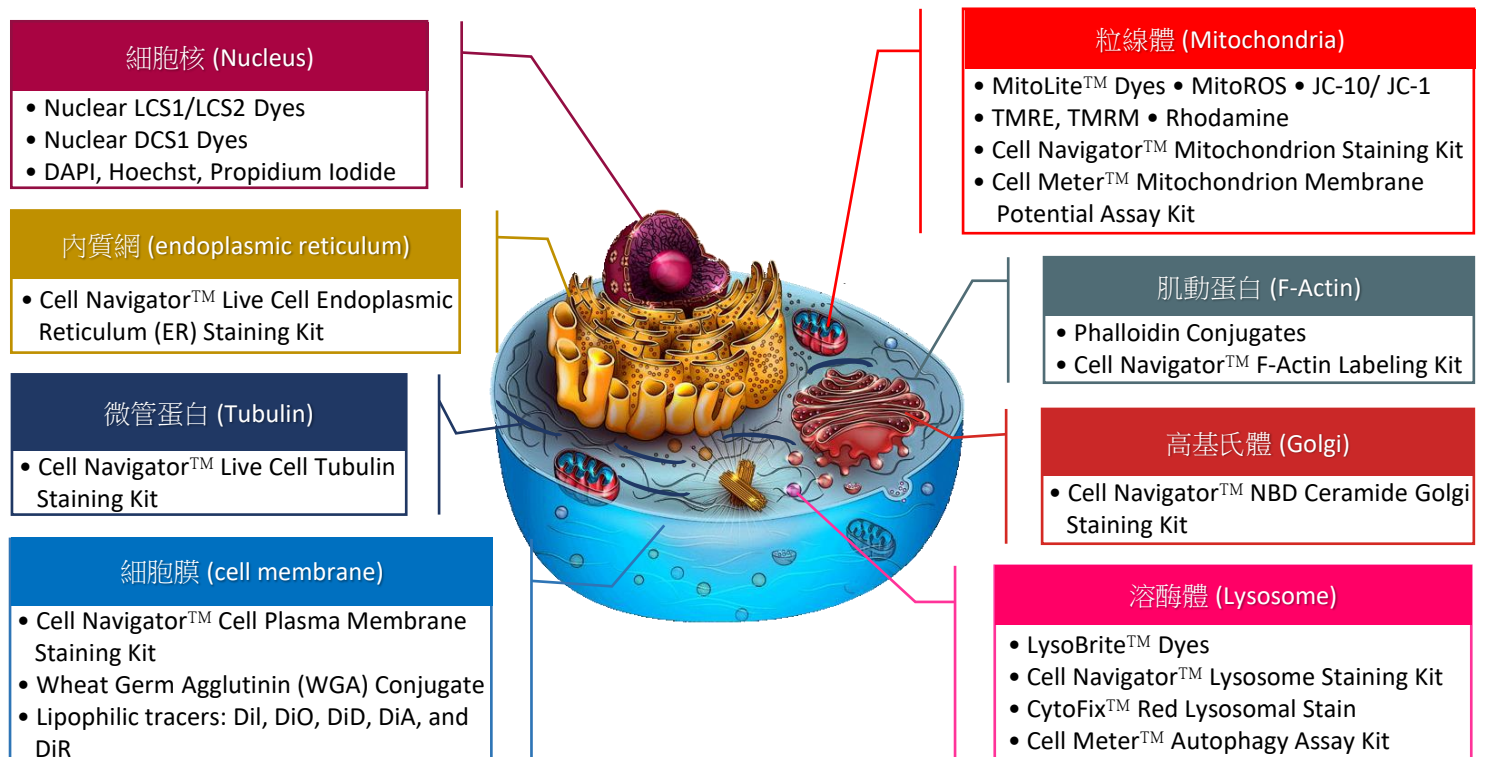
品牌故事

美國AAT Bioquest Inc.是一家研發、生產及銷售生物分析及研究試劑的公司，主要以螢光探針，分子探針，核酸/蛋白質標記、細胞檢測等技術和產品為研發核心，產品廣泛應用於基因合成、細胞檢測、活體追蹤，抗體標記、新藥篩選等領域。



而AAT Bioquest 的品牌創始人曾在Molecular Probe從事研發十餘年，其後Molecular Probe被I牌併購後，後來自創了AAT Bioquest。

AAT 提供了多種品質優良的專業染劑、多種不同偵測模式(吸收光/螢光/冷光)的試劑套組；靈敏度、專一性高，簡易操作省時，在許多發表的文獻上，也被廣泛使用並發表，堪稱生物科技的一大新品牌，品質更勝I牌，價格卻更親民，是您不能忽視的好實驗利器！



* 以上產品若需詳細資料及報價，歡迎洽詢當區業務 *



瑞柏生物科技股份有限公司

RAINBOW BIOTECHNOLOGY CO.,LTD.

0800-086-555 rainbow@rainbowbiotech.com.tw

北區 02-2811-8200 桃竹苗 03-666-0116 中區 04-2315-2922 南區 07-550-0680



瑞柏

LINE

官方帳號上線

ID: @rainbowbio

細胞螢光染劑系列

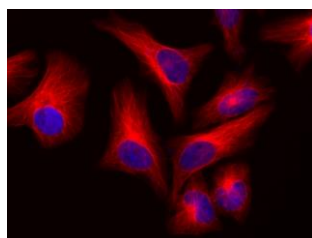
核酸染劑

產品編號	品名	Ex / Em (nm)	包裝
17502	Acridine orange	500/526	100mg
17513	DAPI	358/461	25mg
17515	Propidium iodide	535/617	25mg
17518	Thiazole orange	512/533	100mg
17520	Hoechst 33258	352/461	100mg
17530	Hoechst 33342	350/461	100mg
17552	Nuclear Red DCS1	642/660	0.5ml
17561	LDS 751	543/712	25mg

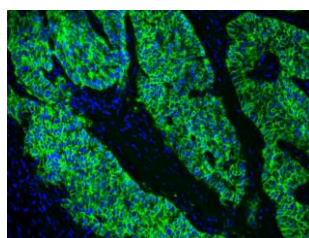
Mounting Solution

NEW!

產品編號	品名	Ex / Em (nm)	包裝
20004	Mounting Medium with DAPI	358/461	50ml
20009	Microscope Mounting Solution	None/None	50ml
27000	Anti-fading Mounting Medium with DAPI	359/457	20ml



※ 利用Mouse anti-tubulin之一抗及 iFluor™ 610 goat anti-mouse IgG(H+L)之二抗染HeLa細胞，並使用Cat. No. 20004 Mounting medium於螢光顯微鏡下觀測※



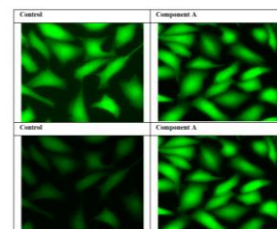
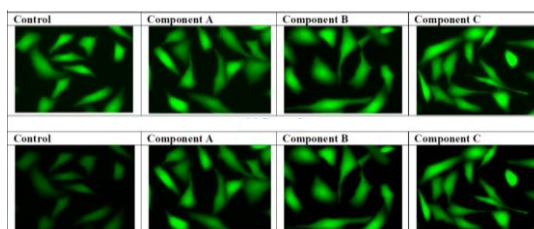
※ 利用rabbit anti-EpCam一抗及 Goat anti-Rabbit IgG二抗，再加 Fluor®488 Styramide™ Cat.No. 45020 染人類肺腺癌細胞，並使用 Cat. No. 27000 Anti-fading Mounting Medium with DAPI於螢光顯微鏡下觀測※

Anti-Fading

產品編號	品名	包裝
20001	Anti-fading Kit I *Optimized for Slide Imaging*	1kit
20003	Anti-fading Kit II *Optimized for Plate Imaging*	1kit

當螢光物質暴露在光照下，會因光漂白的因素導致螢光強度迅速減弱，anti-fading kit可以減緩光漂白的速度，提供您更長的螢光觀測時間。

0 Second
30 Second



0 Second
30 Second

※ 使用 Cat. No. 20001 (左圖) 及 Cat. No. 20003 (右圖) Anti-Fading Kit 後，於螢光顯微鏡下觀測※

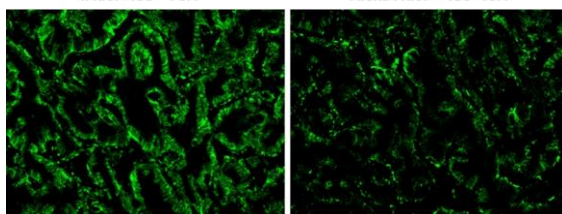
訊號放大系統

NEW!

產品編號	品名	Ex / Em (nm)	包裝
45100	iFluor® 488 Tyramide (TSA)	491/516	200 slides
45020	iFluor® 488 Styramide (PSA™)	491/516	100 slides

iFluor 488™ PSA™

Alexa Fluor® 488 - TSA



Styramide™ Signal Amplification (PSA™) system靈敏度高，可用於偵測細胞或組織中量表現低之目標蛋白，螢光強度為常使用的Tyramide(TSA)之10-50倍。

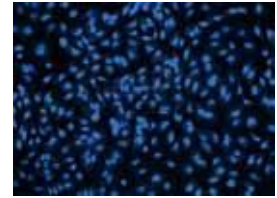
細胞染色標定

產品編號	品名	Ex / Em (nm)	包裝
17030	BrdU	None/None	25mg
23115	Phalloidin-iFluor 488 Conjugate	493/517	300 tests
23119	Phalloidin-iFluor 555 Conjugate	556/574	300 tests
23127	Phalloidin-iFluor 647 Conjugate	650/665	300 tests
22190	Nile Red *UltraPure Grade*	552/636	25 mg

細胞螢光染劑系列

細胞存活率

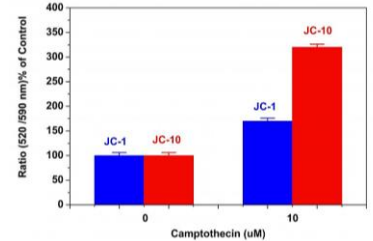
產品編號	品名	Ex / Em (nm)	包裝
17501	7-AAD [7Aminoactinomycin D]	546/647	1mg
22002	Calcein, AM	495/515	1mg
22020	FDA	494/521	1g



※ Cat.No.17513,DAPI ※

粒線體膜電位&粒線體染劑

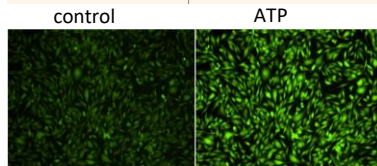
產品編號	品名	Ex / Em (nm)	包裝
22200	JC-1	515/529	5mg
22204	JC-10 *Superior alternative to JC-1*	510/525	5x100uL
22210	Rhodamine 123	507/529	25mg
22220	TMRE	549/574	25mg
22676	MitoLite Orange FX570	545/575	500 Tests
68	Rhodamine 800	682/698	25mg



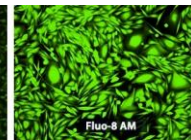
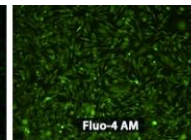
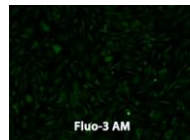
※ Cat. No. 22204 JC-10 (溶解度佳), superior alternative to JC-1 ※

細胞內鈣離子濃度探針

產品編號	品名	Ex / Em (nm)	包裝
21008	EGTA tetrasodium salt	None/None	10ml
21021	Fura-2, AM	363/512	1mg
21011	Fluo-3, AM	506/526	1mg
21121	Rhod-4, AM	524/551	5x50ug
21081	Fluo-8, AM	494/517	5x50ug
NEW! 21130	Cal-520®, AM	493/515	10x50ug
21032	Indo-1, AM	346/475	1mg
21159	Coelenterazine h	437/466	1mg



※ Cat. No. 21081 CHO-K細胞內的receptor對ATP之反應 ※



※ Cat. No. 21081 Fluo-8, 與其他鈣離子濃度探針之比較 ※

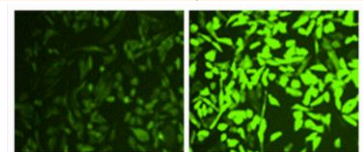
細胞內pH值

產品編號	品名	Ex / Em (nm)	包裝
21202	BCECF, AM	503/528	1mg
21190	RatioWorks™ BCFL, AM *Superior Replacement to BCECF*	503/528	1mg

H₂O₂ sensitive

產品編號	品名	Ex / Em (nm)	包裝
21505	Hydrogen peroxide sensor	490/514	1mg
15206	Dihydrorhodamine 123	507/529	10mg

※ 使用Cat.No.21505(H2O2探針), 左圖為 Control, 右圖為室溫下treated 100mM H2O2 5分鐘 ※



Reactive oxygen species (ROS)探針

產品編號	品名	Ex / Em (nm)	包裝
15200	Hydroethidine [Dihydroethidium]	518/605	25mg
15204	DCFH-DA	504/529	25mg

細胞膜電位

產品編號	品名	Ex / Em (nm)	包裝
22034	DiD perchlorate *UltraPure Grade*	644/663	25mg
22045	DiOC5(3) iodide	482/504	25mg
22046	DiOC6(3) iodide	482/504	25mg
22070	DiR iodide	748/780	25mg
22101	Dil iodide	549/565	100mg
22102	Dil perchlorate	549/565	100mg

Cell Organelles Labing and Cell Tracking系列

*DR: Deep Red Fluorescence

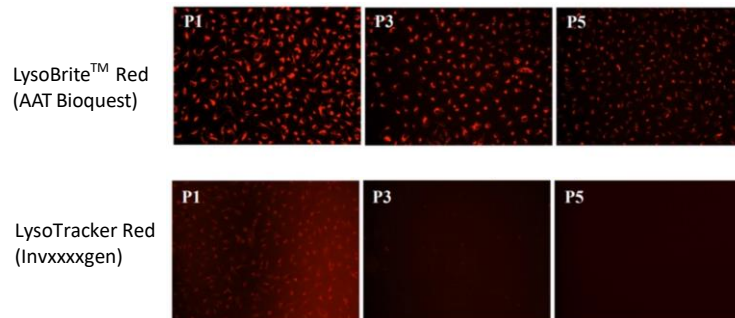
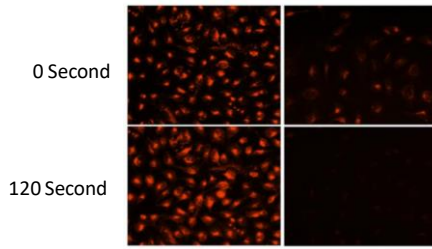
品名	● Fluorescence/Cat. No					包裝	應用
Lysosome Staining Kit	● 22655	● 22656	● 22657	● 22658	DR/22659	500 tests	螢光顯微鏡 流式細胞儀
Mitochondrion Staining Kit	● 22665	● 22666	● 22667	● 22668	DR/22669	500 tests	
F-actin Labeling	● 22660	● 22661	● 22663	● 22664	-	500 tests	螢光顯微鏡
Dead Cell Labeling	● 22600	● 22601	● 22602	● 22603	DR/22604	500 tests	螢光顯微鏡 流式細胞儀
Live Cell Labeling	● 22606	● 22607	-	● 22609	-	200 tests	
Live Cell Tracking	● 22620	● 22621	● 22622	● 22623	DR/22624	200 tests	

Lysosome Staining

與I牌比較AAT LysoBrite 優點

1. 染劑對細胞毒性低
2. 多種螢光可選擇，不限紅色螢光
3. 螢光強度較他牌至少10倍以上
4. 螢光穩定度佳
5. 經過5次繼代，仍可繼續Lyso tracking

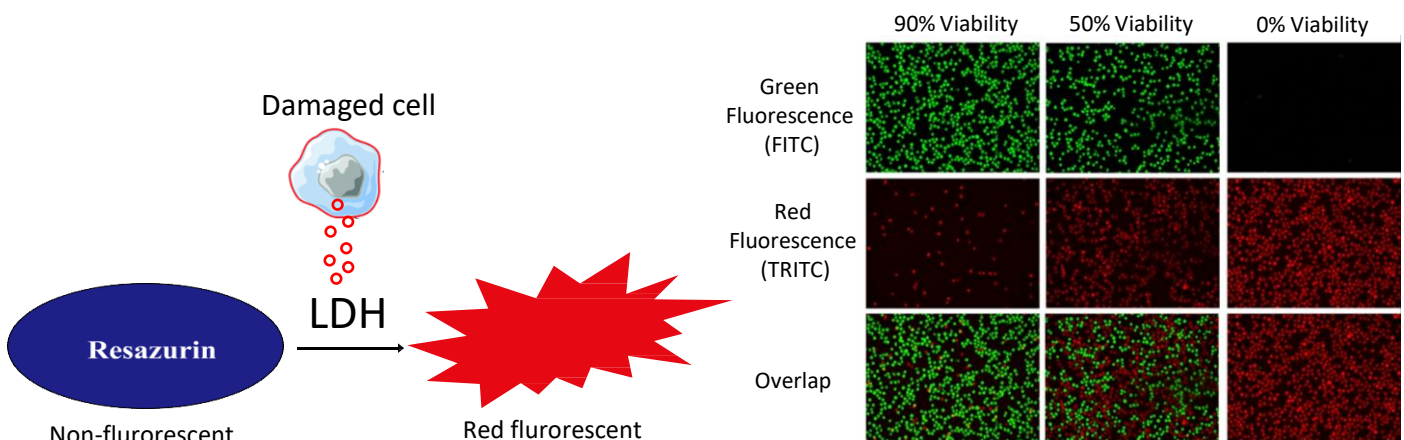
LysoBrite™ Red (AAT Bioquest) LysoTracker Red (Invxxxxgen)



※ 使用 Cat. No. 22658 LysoBrite™ RED，與I牌於螢光顯微鏡下觀測比較(下圖P為繼代次數)※

Cell Cytotoxicity and Cell Viability系列

品名	Absorption(nm) or Fluorescence /Cat. No	包裝
Cell Cytotoxicity Assay Kit	570nm /22780 (Colorimetric，靈敏度高於WST-8,MTT & XTT)	1000 tests
	575nm /13813 (Colorimetric，LDH Assay)	200 tests
	● or 570nm /22781 (等同於AlamarBlue,靈敏度: <100 cells)	1000 tests
Cell Viability Assay Kit	● 22785	500 tests
	● 22786	500 tests
	● ● 22789 (Dual Fluorescence)	200 tests

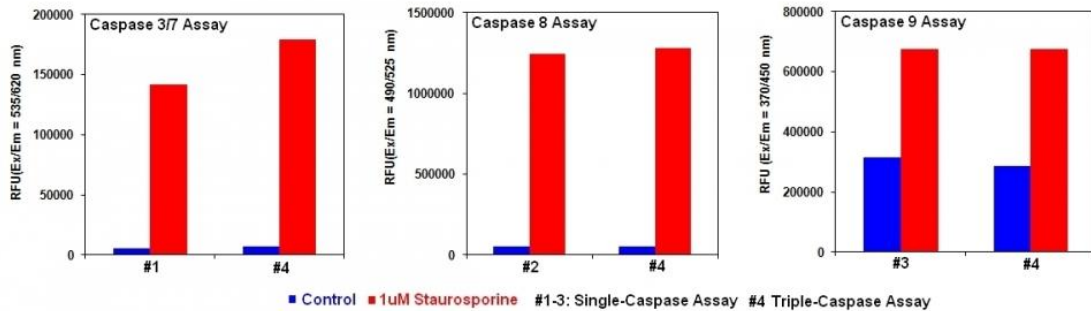


※使用 Cat. No. 22789 Live or Dead™ Cell Viability Assay Kit，於螢光顯微鏡下觀測細胞之不同存活率※

Apoptosis & Autophagy assay kit系列

For 螢光盤式分析儀

品名	● Fluorescence/Cat. No/包裝		
Caspase 3/7 Activity Apoptosis Assay	● 22795/200 tests	● 22796/200 tests	● 22797/ 100tests
Caspase 8 Activity Apoptosis Assay	● 22812/200 tests	● 22798/200 tests	● 22816/100 tests
Caspase 9 Activity Apoptosis Assay	● 22813/200 tests	● 22799/200 tests	● 22817/100 tests
Caspase 3/7, 8 and 9 Activity Multiplexing Assay	●●● 22820 (Triple Fluorescence) /100 tests		

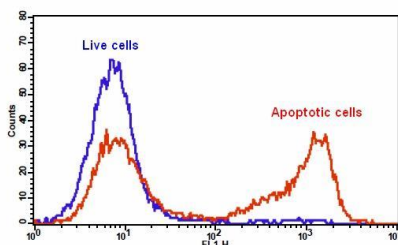


※ 使用Cat. No. 22820, Caspase assay kit

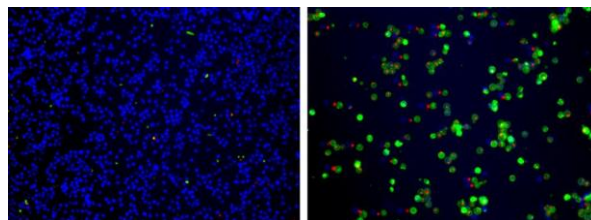
#1-3 使用Single caspase assay kit ; #4 使用Triple caspase assay kit效果佳、快速、不影響個別caspase活性測試※

For flow cytometry

品名	● Fluorescence/Cat. No/包裝
Annexin V Binding Apoptosis Assay (含PI雙染)	●● 22824/100 tests
Phosphatidylserine Apoptosis Assay (含PI雙染)	●● 22831/100 tests *Apopxin™ PS sensor that specifically binds PS with affinity much higher than Annexin V*
Apoptotic and Necrotic Detection Kit	●●● 22840/100 tests *亦可用螢光顯微鏡觀察*
Intracellular GSH Assay Kit	● 22810/100 tests ● with 7-AAD (Cat.No.17501) or with PI (Cat.No.17517)
Generic Caspase Activity Assay Kit	●● 22821/100 tests



※ Cat. No. 22831 ※

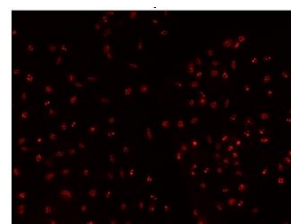


● Live cells
● Apoptotic cells
● Necrotic cells

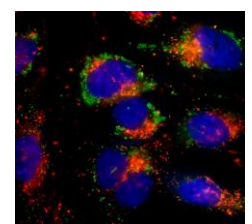
※ Cat. No. 22840, Apoptotic and Necrotic detection kit ※

TUNEL assay & Autophagy assay

品名	Fluorescence/Cat. No/包裝	應用
TUNEL Apoptosis Assay	● 22844/50 tests ● 22849/50 tests	流式細胞儀, 螢光顯微鏡, 螢光盤式分析儀
Autophagy Assay	● 23000/200 tests ● 23002/200 tests 利用特殊的autophagosome marker偵測	



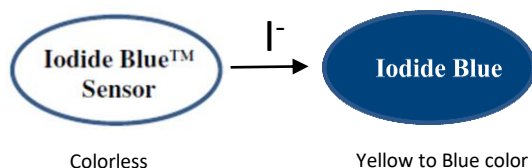
※ Cat. No. 22844, TUNEL assay kit ※



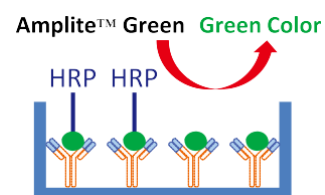
※ Cat. No. 23002, Autophagy assay kit ※

Cellular function assay kit系列

品名	Absorption (nm) or ● Fluorescence or Luminescence/Cat. No	包裝	應用
陽離子 Cation Detection			
Calcium Assay (Fluo-8)	● 36308 *Medium Removal*	10 plates	盤式分析儀
	● 36315 *No Wash*	10 plates	
Calcium Assay (Fura-2)	● 36320 *No Wash*	10 plates	
Calcium Assay (Rhod-4)	● 36331 *Medium Removal*	10 plates	
	● 36334 *No Wash*	10 plates	
Calcium Assay (Luminometric)	Lumino/36305	10 plates	
Zinc ion Quantitation	● 19000	200 tests	
	610 nm/19001	200 tests	
陰離子 Anion Detection			
Chloride Channel Assay	630 nm/36350	10 plates	盤式分析儀
Phosphate (Pi Detection)	600-660 nm/21665	1000 tests	
	● 21660	125 tests	
MESG Phosphate (Pi Detection)	360nm(UV)/21659	200 tests	
Pyrophosphate (PPi Detection)	● 21611	200 tests	
Membrane Potential			
Membrane Potential Assay	● 35999	1 plate	盤式分析儀
	● 36004	1 plate	
Mitochondrial Membrane Potential Assay	● or ● 22800 (JC-10)	500 tests	盤式分析儀
	NIR/22803	500 tests	
	● 22805	500 tests	
	● or ● 22801 (JC-10)	100 tests	流式細胞儀
	NIR/22802	100 tests	
	● 22804	100 tests	
Other			
cAMP	650 nm/36370	1 plate	盤式分析儀
	● 36373	1 plate	
Intracellular Hydrogen Peroxide	● 11503	200 tests	盤式分析儀及流式細胞儀
Intracellular Total ROS Activity Assay	● 22900	200 tests	
	● 22901	200 tests	
Intracellular pH Assay	● 21180	1000 tests	盤式分析儀
Glucose Uptake Assay	● 36500	100 tests	
	575nm /36503	100 tests	
Fatty Acid Uptake Assay	● 36385	100 tests	



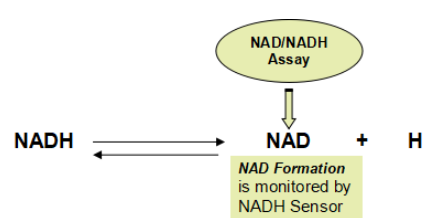
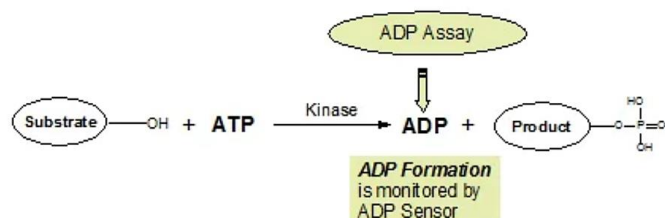
※ Cat. No. 36350, Chloride channel assay kit原理 ※



※ Cat. No. 36370, cAMP colorimetric ELISA assay kit 原理 ※

Biochemical assay kit系列

品名	Absorption or ● Fluorescence or Luminescence/Cat. No	包裝
Acetylcholine	● 11403	200 tests
ADP	● 21655	100 tests
ATP	570nm /21617	100 tests
	● 21620	100 tests
	Luminometric/21609	1 plate
	Luminometric/21610 (Stable luminescence, high Sensitivity)	1 plate
Coenzyme A (CoA)	● 15270	200 tests
Glucose-6-Phospate	575nm /13805	200 tests
	● 13804	200 tests
Glutamic Acid	● 10054	200 tests
Glutathione	● 10055	200 tests
Glutathione (GSH/GSSG Ratio)	● 10056	200 tests
Hydrogen Peroxide	● 11501	500 tests
	NIR/11502	500 tests
D-Lactate	575nm /13811	200 tests
	● 13810	200 tests
L-Lactate	575nm /13815	200 tests
	● 13814	200 tests
Toatal NAD/NADH	575nm /15258	400 tests
	● 15257	400 tests
NAD/NADH Ratio	● 15263	250 tests
NADH	● 15261	400 tests
Total NADP/NADPH	575nm /15260	400 tests
	● 15259	400 tests
NADH/NADPH Ratio	● 15264	250 tests
NADPH	● 15262	400 tests
Sphingomyelin	● 13625	100 tests
Ammonia Quantitaion	660 - 670 nm/10059	200 tests
Aldehyde Quantitaion	550nm /10051	200 tests
	620nm /10053	200 tests
	● 10052	200 tests
Calcium Quantitaion	600 or 650 nm/36361	200 tests
	● 36360	200 tests
Cholesterol Quantitaion	● 40006	200 tests
Choline Quantitaion	● 40007	200 tests
Ethanol Quantitaion	● 40001	200 tests
Formaldehyde Quantitaion	● 10057	200 tests
Fluorescamine Protein Quantitaion	● 11100	200 tests
Glucose Quantitaion	● 40005	500 tests
Urea Quantitaion	650nm /10058	200 tests

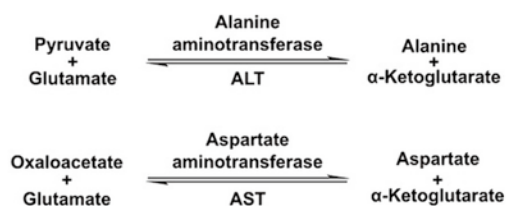


※Cat. No. 21655, ADP assay kit原理※

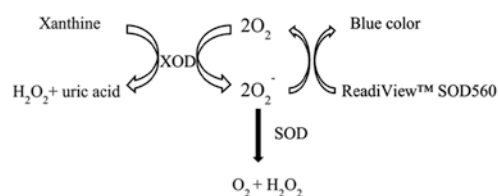
※Cat. No. 15257,15258,15263, NAD/NADH assay kit原理※

Enzymatic assay kit系列

品名	Absorption(nm) or ● Fluorescence or Luminescence/Cat. No	包裝
Acetylcholinesterase (AChE)	410nm /11400	200 tests
	● 11401	200 tests
	● 11402	200 tests
Alkaline Phosphatase (ALP)	400nm /11950	500 tests
	● 11952	500 tests
	● 11953	500 tests
	NIR/11954	500 tests
	Luminometric /11956	500 tests
Alanine Aminotransferase (ALT)	570nm /13803	200 tests
	● 13802	200 tests
Aspartate aminotransferase (AST)	570nm /13801	200 tests
	● 13800	200 tests
Catalase	● 11306	200 tests
Beta-Galactosidase	● 12601	500 tests
Glucose-6-phosphate dehydrogenase (G6PD)	575nm /13807	200 tests
	● 13806	200 tests
Glucose Oxidase	● 11300	500 tests
Glutamate Oxidase	● 11302	200 tests
HDAC	● 13601	200 tests
Universal kinase	● 31001	250 tests
D-Lactate Dehydrogenase (LDH)	575nm /13809	200 tests
	● 13808	200 tests
L-Lactate Dehydrogenase (LDH)	575nm /13813	200 tests
	● 13812	200 tests
Lysyl Oxidase (LOX)	● 15255	500 tests
Monoamine oxidases (MAO)	● 11303	200 tests
MMP-3 Activity	● 13512	100 tests
Universal MMP Activity	● 13510	100 tests
	● 13511	100 tests
	● 11301	200 tests
Myeloperoxidase (MPO)	● 11301	200 tests
Neuraminidases	● 12602	200 tests
Proteasome 20S Activity	● 13456	1plates
Universal Protease Activity	● 13500	500 tests
	● 13501	500 tests
Renin	● 13530	100 tests
Sphingomyelinase	655nm /13620	200 tests
	● 13621	200 tests
Acidic Sphingomyelinase	● 13622	200 tests
Superoxide dismutases (SOD)	560nm /11305	200 tests
Xanthine oxidase (XO)	● 11304	200a tests



※Cat. No. 13800, 13801, 13802, 13803, AST ALT assay kit原理※



※Cat. No. 11305, Superoxide dismutases (SOD) assay kit原理※